




# GUARDIAN FIRE SHIELD™

INTELLIGENCE SECURED

Product Image	Part No.	Extinguisher Content	Protection Room Size	Type	Activation	Datasheet Details	Application
	GfS 365	2.26kg	16" X 16" = 256sq.ft	Flood Fire Suppression Enclosed Spaces	Thermal Induction	<b>Tank Pressure:</b> 175 psi <b>Effective Temperature Range:</b> -45°C to 57°C <b>Activation Temperature:</b> 57°C <b>Spray Time:</b> ≤6s <b>Starting Type:</b> Thermal Induction <b>Extinguishing agent content:</b> 2.26kg <b>Product Life Span:</b> 10 years	Warehouses, Equipment rooms, Inverter Batteries, Electric Vehicles, Commercial & Domestic Kitchens, Libraries, Markets & Shopping Malls, Generators.
	Fire Ninja - Mini Sticker 20g	20g	50g/m <sup>3</sup>	Flood Fire Suppression Enclosed Spaces	Thermal Induction	<b>Extinguishing Density:</b> 50g/m <sup>3</sup> <b>Spray Time:</b> ≤6s <b>Starting Type:</b> Thermal Induction <b>Extinguishing agent content:</b> 20g <b>Proper Temperature:</b> -50°C~ +95°C <b>Product Life Span:</b> 10 years	Small Enclosed Spaces. Residential home electrical panels e-home charging etc.
	Fire Ninja 40g	40g	50g/m <sup>3</sup>	Flood Fire Suppression Enclosed Spaces	Thermal Induction	<b>Extinguishing Density:</b> ≤50g/m <sup>3</sup> <b>Protected Room Size:</b> ≤0.8m <sup>3</sup> <b>Spray Time:</b> ≤2s <b>Extinguishing agent content:</b> 40g <b>Induction Method:</b> thermal induction <b>Feedback Signal Mode:</b> Passive switching signals <b>Size:</b> 135mm*113mm*14mm <b>N.W.:</b> 390±30g <b>Proper Temperature:</b> -30°C~ +70°C <b>Product Life Span:</b> 10 years	Electricity Cabinet, Commercial Charging Stations, Computer Data Centers, etc
	QRR0.1G/S	100g	100g/m <sup>3</sup>	Flood Fire Suppression Enclosed Spaces	Electric Starting	<b>Protected Room Size:</b> ≤1m <sup>3</sup> <b>Spray Time:</b> ≤4s <b>Extinguishing agent content:</b> 100g <b>Induction Method:</b> electric Starting <b>Size:</b> 52mm*54mm*93mm <b>N.W.:</b> 330±30g <b>Proper Temperature:</b> -30°C~ +70°C <b>Product Life Span:</b> 10 years	Full Flood Fire Suppression. Cell Towers, Pump Stations, Wind Turbine, Commercial Charging and Electrical Storage Applications etc.
	QRR0.1G/S-Q	100g	100g/m <sup>3</sup>	Flood Fire Suppression Enclosed Spaces	Electric Starting	<b>Extinguishing Density:</b> 100g/m <sup>3</sup> -130g/m <sup>3</sup> <b>Protected Room Size:</b> ≤1m <sup>3</sup> <b>Spray Time:</b> ≤4s <b>Extinguishing agent content:</b> 100g <b>Induction Method:</b> thermal induction/ electric Starting <b>Size:</b> 46mm*67mm*90mm <b>N.W.:</b> 270±30g <b>Proper Temperature:</b> -50°C~ +90°C <b>Product Life Span:</b> 10 years	Full Flood Fire Suppression. Cell Towers, Pump Stations, Wind Turbine, Commercial Charging and Electrical Storage Applications etc.
	QRR0.3G/S	150g	100g/m <sup>3</sup>	Flood Fire Suppression Enclosed Spaces	Electric Starting	<b>Extinguishing Density:</b> 100g/m <sup>3</sup> -130g/m <sup>3</sup> <b>Protected Room Size:</b> ≤3m <sup>3</sup> <b>Spray Time:</b> ≤14s <b>Extinguishing agent content:</b> 150g <b>Induction Method:</b> electric Starting <b>Feedback Signal Mode:</b> Passive switching signals <b>Size:</b> 52mm*54mm*272mm <b>N.W.:</b> 950±30g <b>Proper Temperature:</b> -40°C~ +85°C <b>Product Life Span:</b> 10 years	Full Flood Fire Suppression. Cell Towers, Pump Stations, Wind Turbine, Commercial Charging and Electrical Storage Applications etc.
	QRR0.3G/S-Q	300g	100g/m <sup>3</sup>	Flood Fire Suppression Enclosed Spaces	Electric Starting	<b>Extinguishing Density:</b> 100g/m <sup>3</sup> -130g/m <sup>3</sup> <b>Protected Room Size:</b> ≤3m <sup>3</sup> <b>Spray Time:</b> ≤14s <b>Extinguishing agent content:</b> 300g <b>Induction Method:</b> electric Starting <b>Feedback Signal Mode:</b> Passive switching signals <b>Size:</b> 187mm*196mm*282mm <b>N.W.:</b> 800±30g <b>Proper Temperature:</b> -40°C~ +85°C <b>Product Life Span:</b> 10 years	Full Flood Fire Suppression. Cell Towers, Pump Stations, Wind Turbine, Commercial Charging and Electrical Storage Applications etc.

	QRR3.0G/S	3000g	100g/m <sup>3</sup>	Flood Fire Suppression Enclosed Spaces	Electric Starting	<b>Extinguishing Density:</b> 100g/m <sup>3</sup> 130g/m <sup>3</sup> <b>Protected Room Size:</b> ≤30m <sup>3</sup> <b>Spray Time:</b> ≤14s <b>Extinguishing agent content:</b> 3000g <b>Induction Method:</b> electric Starting <b>Feedback Signal Mode:</b> Passive switching signals <b>Size:</b> 187mm*196mm*282mm <b>N.W.:</b> 8kg <b>Proper Temperature:</b> -40°C~ +85°C <b>Product Life Span:</b> 10 years	Full Flood Fire Suppression. Cell Towers, Pump Stations, Wind Turbine, Commercial Charging and Electrical Storage Applications etc.
---	-----------	-------	---------------------	--	-------------------	---	---

### OIL & GAS



### RAIL TRANSPORTATION



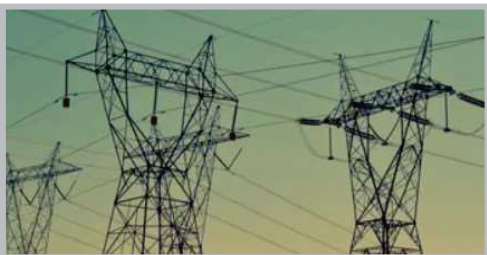
### COMPUTER NETWORKS



### AUTO INDUSTRY



### POWER GRID



### MARINE

